

YALE VENTURES

An aerial photograph of the Yale University campus, showing a grid of stone buildings, green lawns, and trees with some autumn-colored foliage. The image is used as a background for the text.

INNOVATION
and Entrepreneurship
ACROSS YALE

THE BLAVATNIK FUND FOR INNOVATION AT YALE

Supporting groundbreaking life sciences research that impacts the world's greatest health challenges

ABOUT

YALE'S FLAGSHIP LIFE SCIENCE ACCELERATOR

\$25M GRANT: (2017 – 2023) CYCLES 1-7

- 73 Awards, 63 unique projects
- 19 start-ups/emerging start-ups
- \$254M raised for Blavatnik funded start-ups
- 3 INDs, 4 clinical trials initiated

JUST ANNOUNCED SEPT 6TH, 2023

**BLAVATNIK FAMILY FOUNDATION GIVES
ADDITIONAL \$40 MILLION TO YALE INNOVATION
FUND**

AREAS OF INTEREST

- ✓ Therapeutics
- ✓ Platform / Research Technology
- ✓ Medical Devices / Diagnostic
- ✓ Digital Health

FOCUS

Early-stage life science research

AWARDS

~16 projects funded per year

\$30K: Accelerator Awards (6 months)

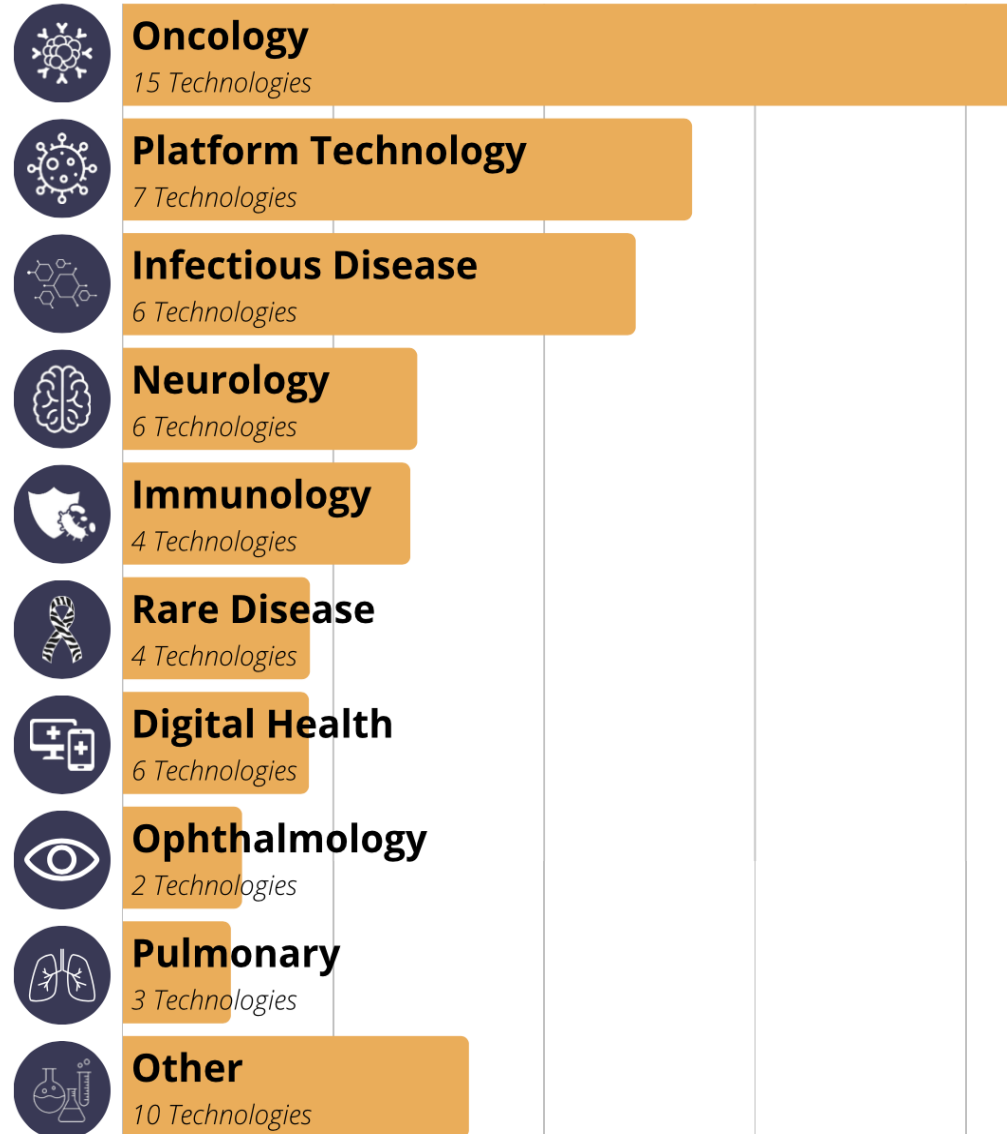
\$100K: Pilot Award (12 months)

\$300k: Development Award (12- 24 months)

CRITERIA FOR SUCCESS

- ✓ Research addresses major **unmet need**
- ✓ Strong indications of **commercial interest**
- ✓ Technology is near a “**value inflection point**”
- ✓ Technology is **patentable** w/ freedom to operate
- ✓ Committed **principal Yale investigator**

PREVIOUSLY FUNDED PROJECTS



WE ARE HERE TO HELP



APPLY: Yale Ventures Blavatnik page

<https://ventures.yale.edu/programs/the-blavatnik-fund-for-innovation-at-yale/apply-for-blavatnik>

Simple application form

Pitch Templates available

- Therapeutics
- Digital Health

Examples of previous winning pitches on web site

ASK THE TEAM!



Morag Grassie



Jenn Beecham



Candy Hwang

PROPOSAL SUBMISSION GUIDELINES

A 5-minute slide pitch is all you need for your proposal submission!

6-8 PowerPoint slides that you can present in 5 minutes that answer these basic questions:



Product

- ✓ What's the product/service?



Market Landscape

- ✓ What's the market?
- ✓ What's the competition?



Product Strategy

- ✓ What are your differentiating unique benefits?
- ✓ How would this product make money?



Current State

- ✓ What is the status of your product?
- ✓ Who is on your team?



Purpose

- ✓ What would you accomplish with Blavatnik funding?
- ✓ What do you aim to make happen with these results in
in
- ✓ hand? With whom?

APPLY EARLY (NOW!) FOR MAXIMUM SUPPORT

2023

OCTOBER 31

Deadline for pre-proposals

- ✓ 10/31: All applications must be submitted by 5PM

NOVEMBER

Quarterfinalists Pitch Evaluations

- ✓ 11/15 & 11/16: Therapeutics & Devices
- ✓ 11/17: Digital Health

15 Min Zoom

Great exposure to industry experts/investors

DECEMBER 7

Yale Life Sciences PitchFest

- ✓ 12/7: Selected semi-finalists 5-minute pitch

In Person Event

Great exposure to Investors/partners

2024

JANUARY 5

Finalists Selected

- ✓ Board selected finalists notified shortly after

FEB/MARCH

Final Confidential

Presentations

- ✓ 15-minute pitch to incorporating board feedback & proposed budget.
- ✓ Blavatnik Team will support to prepare.

In Person Event

Great exposure to Board (Investors)

MARCH/APRIL

Funding Starts

As soon as we can get COAs issued!



WE ARE HERE TO HELP



APPLY: Yale Ventures Blavatnik page

<https://ventures.yale.edu/programs/the-blavatnik-fund-for-innovation-at-yale/apply-for-blavatnik>

Simple application form

Pitch Templates available

- Therapeutics
- Digital Health

Examples of previous winning pitches on web site

ASK THE TEAM!



Morag Grassie



Jenn Beecham



Candy Hwang

THE COLTON CENTER FOR AUTOIMMUNITY AT YALE

Supporting the development of therapeutics, diagnostics & platform technologies

ABOUT

- **Founded:** Created with the vision and generosity of Judith and Stewart Colton in 2019
- **One of four Centers:** Yale, NYU, Penn & Tel Aviv University
- **Focus:** translational R&D in autoimmune and allergic diseases
- Supports development of **therapeutics, diagnostics & platform technologies**
- **Goals:** IP creation, licensing, company creation, and product development

SUMMARY

| | PILOT | DEVELOPMENT |
|-----------------------|--|-----------------------|
| AMOUNT | ≤ \$100,000 | ≤ \$200,000 |
| DURATION | 12 months | 24 months |
| FUNDING PERIOD | July 2024 – June 2025 | July 2024 – June 2026 |
| ELIGIBILITY | All Yale faculty: assistant, associate & full professors, non-ladder research track | |
| DEADLINE | December 21, 2023 | |
| APPLICATION | InfoReady https://yale.infoready4.com/#competitionDetail/1915265 | |

AREAS OF INTEREST

| THERAPEUTICS | DIAGNOSTICS / BIOMARKERS |
|--|---|
| <ul style="list-style-type: none"> ▪ Small molecules ▪ Biologics ▪ Cell therapies | <ul style="list-style-type: none"> ▪ <i>in vitro</i> tests ▪ Imaging agents ▪ Endotyping tools |
| Novel approaches | Patient stratification |
| Target discovery/validation | Responders / non-responders |
| Host-microbiota interactions | Database creation |
| Platform technologies | |
| Digital therapeutics/diagnostics/algorithms | |
| <p><u>Cross-disciplinary projects</u> with Chemistry/Medicinal Chemistry, Chemical Engineering, Engineering, Medical Devices, and Materials Science approaches</p> | |

APPLICATION PROCESS



Plus

- Graphical Abstract
- Figures
- Simple Gantt Chart
- References
- Budget
- Biosketches

Review

under confidentiality

July 1, 2024

Due: December 21, 2023

LINKS & CONTACTS

Application Portal

<https://yale.infoready4.com/#competitionDetail/1915265>

(or search for 'Colton Center' in InfoReady)

Questions or requests for pre-proposal meeting:

Email: coltoncenter@yale.edu

Makoto Yoshioka, Director

Email: makoto.yoshioka@yale.edu

Prof. Joseph Craft, Scientific Director

Paul B. Beeson Professor of Medicine
(Rheumatology, Allergy and Immunology)
Professor of Immunobiology
Program Director, Investigative Medicine

Email: joseph.craft@yale.edu

THE ROBERTS INNOVATION FUND

Supporting engineering and applied science breakthrough innovations

OVERVIEW

Bringing **Yale SEAS breakthrough technologies** that solve real-world problems to their greatest impact in the world.

FOCUS AREAS*

Engineering and applied science breakthrough innovations

AWARDS

\$500K in total awards. Up to \$150K per awardee.

CRITERIA FOR SUCCESS

- ✓ Yale Faculty: SEAS faculty appointment.
- ✓ Disruptive Innovation: Novel project, the merit of the innovation is clearly articulated.
- ✓ Solving a Significant Problem: Aligned to a specific market need, with potential for scale.
- ✓ Proof of Concept: Demonstration that the initiative is technically feasible.
- ✓ Funds: Clear articulation of the use of funds.

KEY BENEFITS

GOALS

- ✓ Enhance positioning of Yale Engineering
- ✓ Support projects on their path to greatest impact
- ✓ Accelerate path from lab to market

HOW WE SUPPORT

- Cash awards (up to \$150K)
- Define perks based on domain area
- Advisory Board feedback
- Thoughtful programming
- Presentation opportunities
- Investor meetings

ACCELERATOR PROGRAMMING ENHANCEMENTS

Additional Workshops for Accelerator Awardees
(Monthly session aligned to award timing over one year)



Using your Roberts Cash Awards (working with FRMS etc)



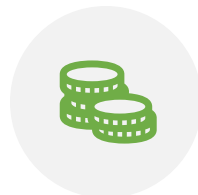
Company Formation



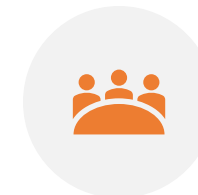
IP Considerations



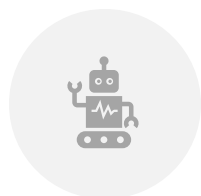
Customer Discovery
(Path to Problem-Solution, Product Market Fit)



Fundraising (Financial Modeling, Term Sheets, Due Diligence & More)



Running Effective Board Meetings



Product / Software Development (Agile Development, UX)



Hardware Development
(Regulations, Manufacturing Considerations)



Venture Lab Intensive Workshops (Strategic Coaching)

APPLY

Apply or ask questions today! We're excited to learn about your work!

APPLICATIONS ARE OPEN

<https://ventures.yale.edu/roberts-innovation-fund/application-information>

QUESTIONS

Contact: Claudia Reuter, Director of the Roberts Innovation Fund

Email: claudia.reuter@yale.edu

Schedule 1:1 Office Hours:

<https://calendly.com/claudia-reuter-1>

VENTURE LAB

Resources and guidance to support Yale faculty through the venture development journey

WHAT IS VENTURE LAB?

Venture Lab is a series of collaborative meetings and workshops that help faculty innovators articulate their research, explore applications with market potential, and receive guidance from industry experts.

GOALS OF VENTURE LAB

DISCOVER

Enable faculty innovators to explore and articulate market application for their research

SUPPORT

Support faculty with guidance to advance science validation, conduct market research, engage in early customer development, and substantiate market potential

DE-RISK

Help faculty determine next set of questions/ milestones that need to be met to establish a viable venture

RESOURCES PROVIDED

INTERACTIVE COACHING

Intensive feedback sessions with **industry experts & entrepreneurs/ executives in residence.**



INDUSTRY EXPERTISE

- ✓ Digital Health
- ✓ Data Science
- ✓ Therapeutic
- ✓ Med Tech
- ✓ High Tech
- ✓ Climate Tech



RESOURCES

Building a **shared resource library** to support Yale innovators and prepare for future funding rounds.



FELLOWSHIPS

Supported by **graduate student consultant teams** who conduct research and prep each session.



ENTREPRENEURS AND EXECUTIVES IN RESIDENCE

Our **120+ EIRs** have deep **operational experience** and have gone through the process of turning new technologies into new businesses. They act as an early “sounding board” for Yale innovators developing startups.



YaleNewHavenHealth
Yale New Haven Hospital

Canaan



Medtronic

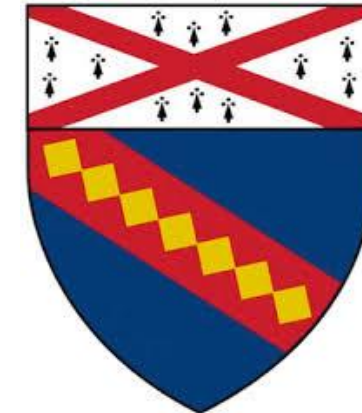
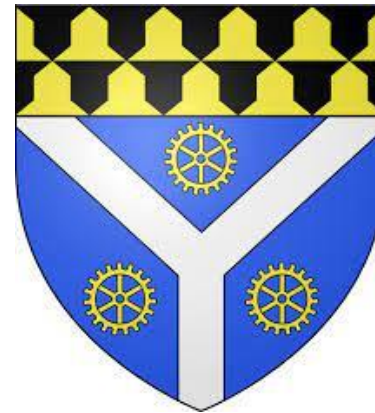
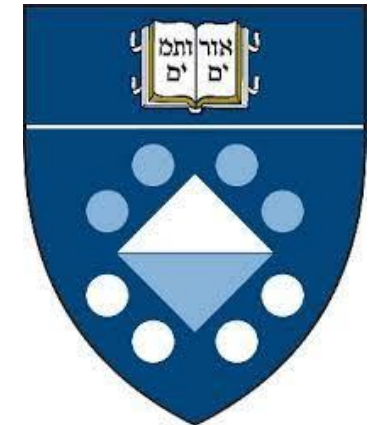


REGENERON



GRADUATE STUDENT FELLOWS & ASSOCIATES

Our **30+ Graduate Student Associates** bring forth diverse backgrounds and interests. They hail from all corners of Yale, and represent dozens of industries and scientific discipline.



Our associates hail from Graduate School of Art & Sciences, Yale School of Medicine, Yale School of Management, Yale School of Engineering & Applied Sciences, and the Yale School of Public Health

PROCESS

1. Discuss Venture Lab with your **Yale Ventures Business Development Lead** or schedule **Office Hours**.
2. Faculty assigned a Venture Lab Associate who will start discussion on **research application** & market research.
3. Venture Lab Associate assists with **market research**.
4. EIRs brought into **coach and mentor** Faculty
 - 1 on 1 expert consult
 - Venture Lab workshops with multiple EIRs
 - Ongoing coaching with relevant industry experts

Contact: **MIN KIM**

Associate Director, Venture Lab
min.j.kim@yale.edu

Q & A

Interesting in applying?

BLAVATNIK



COLTON



ROBERTS



YALE FACULTY PANEL

Meet Blavatnik, Colton, Roberts Awardees



JIM BOYLE

Executive Director,
Faculty Innovation,
Yale Ventures



**RANJIT
BINDRA**

Athena Therapeutics -
Targeting cancer at its core



**BABIS
PAPAMANTHOU**

Lagrange
Non-interactive cross-chain
state proofs



**ANNE
EICHMANN**

Monoclonal Antibody Mediated
Blood-Brain Barrier Opening



**IAN
ODELL**

Development of a Human
Epiregulin Therapeutic
Antibody for Treatment of
Fibrotic Disease